



Realising potential: Nurturing leaders of the future



Welcome to your Sixth Form



Dear Students,

Norbury Manor is a high-achieving sixth form provider that will provide you, the student, with the skills you need to succeed in your chosen future pathway.

Our sixth form is vibrant, diverse and an integral and valued part of our school community. When you join us, you will have exciting opportunities that enable you to develop your leadership skills, explore new and interesting personal interests and hobbies, and achieve your academic aspirations. You will have access to your own sixth form block with modern teaching rooms, a computer suite for private study and a large common room.

We provide outstanding pastoral support alongside high quality independent careers information, advice and guidance to ensure that you are aware of all of the routes to further and higher education and employment that are open to you.

Your teachers will push you to achieve and support you to be the best you can be. The world is changing at a rapid pace and to successfully take your place and make your mark you will need to be adaptive, creative, enterprising, courageous and think globally. At Norbury Manor, you will have many opportunities to develop these key skills and attributes.

When you join us at Norbury Manor Sixth Form you will study in a happy, successful and caring environment where lifelong friendships are forged. If you think you have what it takes to add to our already thriving student community, please come and visit us to find out more, take the opportunity to see our facilities and talk to our students, they will tell you that they made the right choice studying with us.

Life after GCSEs is all about choices, your choices!

Mrs M Hayden
Headteacher



Please take your seat, your future is about to begin...

Trevor Dale, Norbury Manor Head of Sixth Form introduces the brilliant opportunities that await you



What's great about joining Norbury Manor?

We care that:

- You will experience a vibrant journey into your future with tailored subject pathways.
- You will join a close-knit community where you will enjoy fantastic pastoral care.
- Norbury Manor will provide you with a springboard to go on to further education, employment or an apprenticeship.

Will Norbury Manor suit me?

Norbury Manor has a supportive, friendly environment which will allow you to:

- Stretch yourself academically.
- Get involved in a wide range of clubs and activities.
- Think creatively, work independently and develop the skills necessary to succeed.

Is Norbury Manor ready for my future?

You will have access to:

- An experienced form tutor to guide you through your sixth form experience.
- Ongoing support for transition between year 12 and year 13.
- Opportunities, encouragement and support for Work Experience, especially through 'Moving on Week'.
- A dedicated Careers Team to support you in your next steps.

- Support with UCAS applications.
- Support with Apprenticeship applications.
- Norbury Manor has a range of links to many widening participation schemes which can provide support for sixth form students to achieve places at Russell Group universities and into employment.
- University visits.
- A dedicated private study area.
- 22 specialist teaching rooms.
- A stunning common room.
- Excellent access to ICT.

How good are we?

- We are making progress in our journey.
- We are a 'good' sixth form but we have the ambition and desire to be an 'Outstanding' sixth form.

What did Ofsted say about us in 2017?

"Norbury Manor is a positive environment for the students in the sixth form. Students grow into responsible, thriving young adults. They show self discipline and work hard. They achieve good qualifications, suitable to their needs. They move on successfully to universities, apprenticeships, further education and employment."

So, if you are a forward thinking individual and are excited about the opportunities available to you at the Norbury Manor Sixth Form you need to visit us at our Open Evening.

What makes Norbury Manor special?

Our sixth form is a very caring place where we are all valued as individuals. On the following pages some of our students and alumnae share their experiences and describe where your time at Norbury Manor can lead you.

Setting you in the right direction, our pastoral and careers specialists share how their methods support and guide you through this phase of your development.

Emma Nicholls

Pastoral Support Leader

The main aim of my role is to ensure that you achieve your potential, are motivated, engaged and fully prepared for life beyond our Sixth Form. Part of my job is to implement the college policies on discipline, behaviour and attendance as well as providing a robust but caring support system.

I am always available to students if you have any concerns over your work or personal issues and can assist you to resolve any difficulties you might be facing. My door is always open.

I do this by supporting the Head of Sixth Form and offering you individualised pastoral care and support.

Alison Park

Careers Adviser

My role, in a nutshell is to empower, educate, inform, advise, guide, inspire, motivate and support you into positive opportunities after completing your studies at NMBEC.

I deliver careers guidance in a number of ways:

- 1:1 structured, impartial and independent careers guidance appointments
- Facilitating and delivering group sessions
- Collaborating with staff to provide effective careers education
- Careers talks on qualifications, options, employability and training
- Attending NMBEC events to give advice on education, employment and training
- Arranging events and visits from other careers professionals so you have access to the most up to date information and guidance as well as a range of opportunities you may not have even considered.

A warm hello, from the Head Student Team at Norbury Manor Sixth Form

As the Head Team we believe it is our mission to help existing students and newcomers alike to enjoy their time in the sixth form at Norbury Manor and we aim to make your transition into our sixth form community as smooth as it can be.

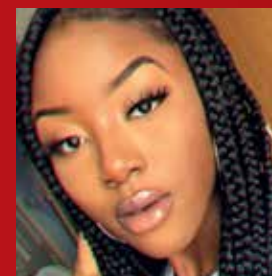
You will find that Norbury Manor is a great environment in which to learn new subjects,

develop your skills and make new friends.

Being here has helped us to develop our leadership and communication skills and we are sure you will benefit just as much as we have.

We look forward to welcoming you to the sixth form.

Head Girls



Emily-Rose

- > Religious Studies
- > English Literature
- > Health and Social Care

I'd like to become an investigative journalist or a news reporter depending on which career path I eventually choose to pursue.



Sehar

- > Biology
- > Chemistry
- > Psychology

I am planning to attend Imperial College London to study Medicine and hopefully become a GP.



Shireen

- > Religious Studies
- > Criminology
- > Health and Social Care

My goal for the future is to be running my own business which is something I'm really passionate about.

Deputy Head Girls



Maryam

- > Biology
- > English Literature
- > Psychology

I have always had a passion for law which followed on from studying Citizenship at GCSE level and I want to be able to make a difference in the world.



Samira

- > English Literature
- > Economics
- > Business Studies

I hope to go to university after my A Levels, but I am still looking at my options and have not chosen a particular course or university yet. I am interested in becoming an investment banker.

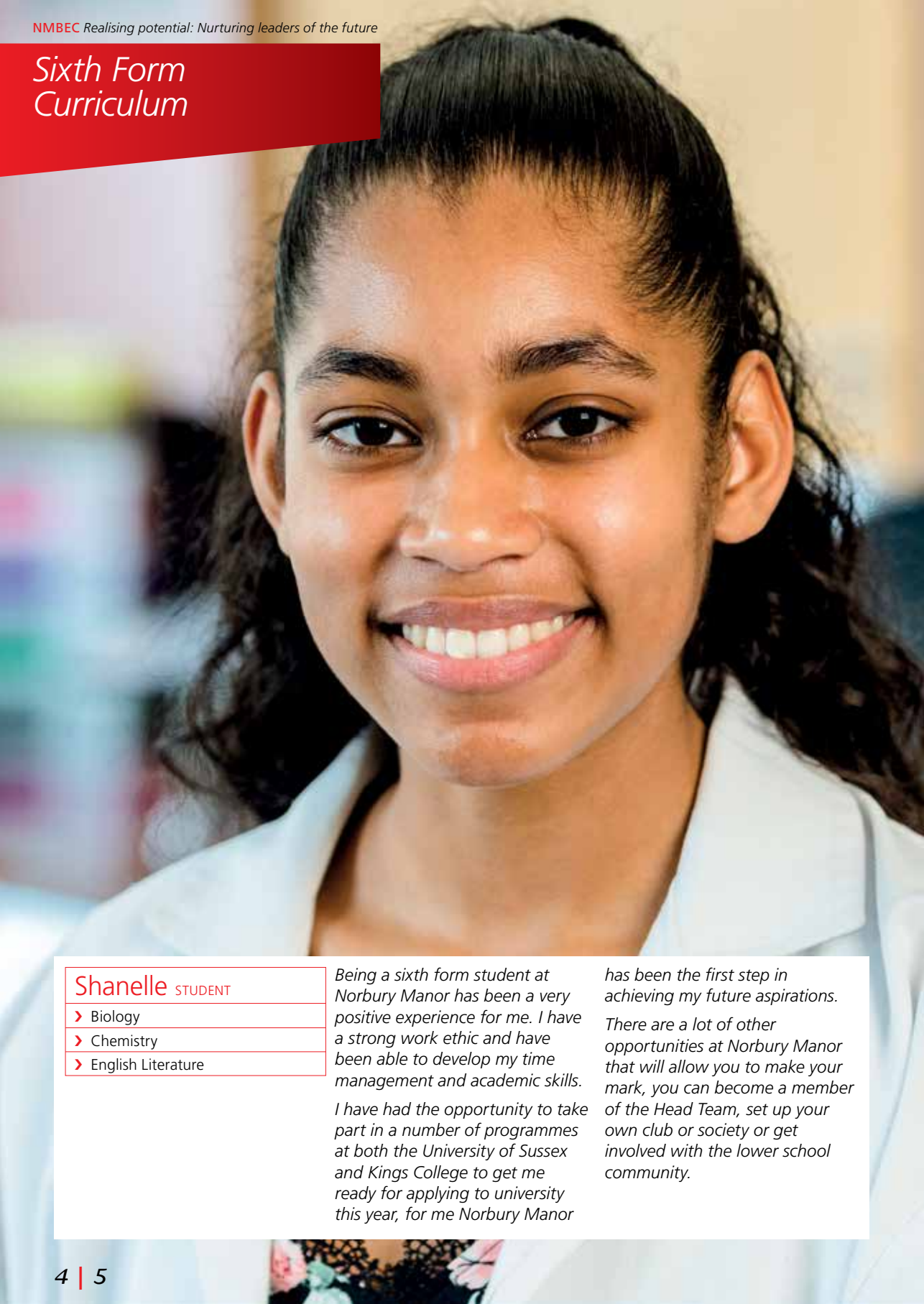


Zainab

- > English Literature
- > History
- > Religious Studies

My plan after sixth form is to study Philosophy at Kings College, London.

Sixth Form Curriculum



Shanelle STUDENT

- > Biology
- > Chemistry
- > English Literature

Being a sixth form student at Norbury Manor has been a very positive experience for me. I have a strong work ethic and have been able to develop my time management and academic skills.

I have had the opportunity to take part in a number of programmes at both the University of Sussex and Kings College to get me ready for applying to university this year, for me Norbury Manor

has been the first step in achieving my future aspirations.

There are a lot of other opportunities at Norbury Manor that will allow you to make your mark, you can become a member of the Head Team, set up your own club or society or get involved with the lower school community.

Our sixth form is well established and flourishing, offering a modern and relevant curriculum. We offer a wide range of AS, A2 and BTEC courses for students and further new courses are introduced as the sixth form continues to grow.

The following subjects are being offered:

- | | |
|--|-------------------------------------|
| Computing & Life Sciences Faculty | Mathematics Faculty |
| Business Studies | Mathematics |
| Computer Science | Further Mathematics |
| Economics | MFL & Expression Faculty |
| Health & Social Care | Music Performance |
| Psychology | Performing Arts - Acting |
| Sociology | Sports & Exercise |
| | Spanish |
| English & Media Faculty | Science Faculty |
| English Literature | Applied Science |
| Media Studies | Biology |
| | Chemistry |
| Humanities Faculty | Criminology |
| Extended Project Qualification | Forensic Science |
| Geography | |
| Government & Politics | Technology Faculty |
| History | 3D Design |
| RS: Philosophy & Ethics | Fine Art |
| | Graphic Art |
| | Photography |
| | Textiles |

Nina STUDENT

- > Health & Social Care
- > Media Studies
- > Sociology

I am very happy to be a part of the sixth form at Norbury Manor because it has so much to offer. I remained in the sixth form after finishing KS4 because of the positive environment, the supportive staff and the range of subjects offered here. I am planning to go to university but have more work to do on finding the right course for me at the right university; luckily we have a lot of support with making these choices.



Louise STUDENT

- > Business Studies
- > Health & Social Care
- > RS: Philosophy and Ethics



Studying a mixture of BTEC and A Level subjects is proving to be a good pathway for me. The BTEC approach allows me to complete projects and assessments as I study the different units and I can balance this with the exam elements of my A Level subjects.

Students should complete their application form indicating their initial subject preferences and reserve choices. All students who apply for a place at the Norbury Manor Sixth Form are then invited to interview and their subject preferences will shape our final curriculum offer. Subjects will then be arranged into option blocks based on student preferences in order to satisfy the needs of the majority of students.

Students without a 9–4 grade in Maths and English GCSE will be required to attend retake classes in these subjects.

Enrichment

Sixth form students have access to a wide variety of enrichment activities. All year 12 students will take part in a team building day to build a sense of teamwork and co-operation. Students will also have opportunities to visit universities and businesses as well as being able to take part in subject specific visits. Numerous clubs and activities outside of the classroom are also available to the students and include the Duke of Edinburgh Award Scheme and the Debating Club.

We are part of a number of 1st Generation Widening Participation programmes and this supports our sixth form students to access top flight universities,

industry insight days, work experience in top firms and dedicated university Open Days.

PSHE

This is compulsory throughout the sixth form programme of study. Students will spend time with their form tutors following a programme of study which includes topics as varied as study skills, careers guidance and the UCAS process.

Participating

Sixth form students benefit from being a part of a flourishing, caring community and are encouraged to take part in events linked to the wider life of the college to develop their leadership and citizenship skills.

Additionally, we organise a range of activities throughout the year to encourage students to look beyond their time in the sixth form and plan towards their futures. These events include visits to universities and careers exhibitions, work shadowing and mentoring programmes pairing our students with those already at university.

During the sixth form, students will develop the skills required in order to be successful in higher and further education or employment.

Olivia STUDENT

- > Art & Design Diploma
- > English Literature
- > Extended Project Qualification

I am currently studying for a diploma in Art. As a sixth former, some of my time is spent in the common room, talking with friends and playing games as well as working! The atmosphere is warm, friendly and welcoming and the common room is always buzzing. I have made many new friends with so many new people, including students joining us from other schools, who fit right in and quickly become a part of our school.



Hilay STUDENT

- > Biology
- > Business Studies
- > Chemistry



There are a range of activities you can take up in the sixth form, I am a member of the Medical Society and have been able to take part in a lot of discussions, trips and visits. The best so far was the opportunity to take part in the Royal Society of Medicine "Operating Tour Live" event. We were able to view and take part in a range of scientific dissections under the direction of medical professionals – it was such an amazing experience.

Where can Norbury Manor take you?

Here are a few of the very many journeys that our alumnae have been on, and their inspirations as well as aspirations that have helped shape their futures so far...

"Being here made me resilient."

Khadijah ALUMNA

- > 2017–current: Georgia State University, USA – Neuroscience and Pre-Med



I joined Norbury Manor Sixth Form as an external student from Carshalton Girls. I studied A Levels in English Literature, History and Drama along with an AS Level in French.

Coming to Norbury Manor was a huge adjustment for me but I was able to embark on this journey with the support of the friends I made in my first few days. Being here made me resilient and allowed me to develop my leadership skills. I have had opportunities to perform in events and be an advocate for the things I believe in. I have made lifelong friends during my time here.

I was accepted into Georgia State University in the USA with an International Scholarship. Currently, I am majoring in Neuroscience and Pre-Med and am looking forward to the rest of my time studying in the USA.

"This was the right place for me."

Natalie ALUMNA

- > 2013–2014: Plymouth University – Mechanical Engineering
- > 2014–2016: Plymouth University – Forensic Science
- > 2016–2017: Kingston University – Forensic Science
- > 2017–present: Teacher in the Science department at Norbury Manor



Norbury Manor has always been like a second home for me, a family that always cared and looked after me. I joined in year 7, not wanting to move on from my primary school. However it didn't take long to get in to a routine and to realise that this was the best place I could have come to. The support given by the pastoral team and all of my teachers throughout my time here was incomparable to any other school I have visited. They were there every step of the way both academically and pastorally.

After finishing GCSE's I had no doubts in my mind that I would stay in the sixth form. I chose to study Biology, Maths, Psychology and Physics. Whilst this was a challenging 2 years, I enjoyed every moment of it.

After sixth form, I started a BEng in Mechanical Engineering, but soon knew that this was not right for me and I changed to a BSc in Forensic Science. I knew from my first lecture that I had made the right decision and I graduated from Kingston University with a First class degree.

I decided to pursue a teaching career and was privileged to be offered the opportunity to work in the science department at Norbury Manor where I teach Science and Criminology. It has been one of the most rewarding and challenging experiences I have had so far.

“It’s a school where every student matters, and no one is left behind.”

“I have made such wonderful friends for life.”

Sarah ALUMNA

- › 2011–2014: Oxford University – Geography
- › 2014–2015: GlobalGiving UK – Youth Programme Co-ordinator
- › 2015–2016: The Holocaust Educational Trust – Ambassador Programme Administrator
- › 2016–2019: Greater London Authority – Data Support Officer
- › 2019–present: Greater London Authority – Project Support Officer



When I started at Norbury Manor in year 7, I was extremely shy, with few aspirations. It soon became clear that Norbury Manor was different from the other schools.

I loved school and my confidence grew. When it came time to consider my post-16 education I realised I didn’t want it to end!

I knew that the excellent teaching and support system would get me through my A Levels, and I was excited by the opportunities that the sixth form had to offer. In the sixth form, I was elected Head Girl which gave me a lot of responsibility in the school, and helped to boost my confidence. With the help of my teachers, I managed to continue my academic success, and get into Oxford University to study Geography.

After my degree I entered the world of work. I started by working for two small charities that delivered youth programmes. Currently, I work in the Mayor of London’s Health Team at the Greater London Authority, where I’m keen to stay and develop my project and programme management skills further. It’s an honour to work directly on initiatives that strive to improve the health and wellbeing of fellow Londoners.

My years at Norbury Manor taught me to always work hard and always give back, and now with every step I still strive to do just that.

Shinal ALUMNA

- › 2014–2018: Virginia Commonwealth University, USA Undergraduate student – Chemistry
- › 2018 –present: Chemist at a Diagnostics Clinical Lab, USA



Norbury Manor proved to be the ideal sixth form for me. I wanted to be at a sixth form where I was already well established and the teachers knew me. I did not want the disruption of moving to another school as this would impact negatively on my education. I chose to study Biology, Chemistry, and Maths to A Level and Geography to AS Level.

Before university, I took a gap year to explore my university options and it was during this time I chose to apply to American universities to study Chemistry because of the numerous opportunities the US offers to students. My teachers at Norbury Manor helped me enormously with my applications to American universities and gave me the confidence to study abroad.

I studied at Virginia Commonwealth University in the USA and I became immersed in American culture. This boosted my confidence to go out into the world and try new things.

I successfully graduated with a Bachelor’s degree that has opened up doors to multiple career paths and I currently work for the second largest specialised clinical lab in the States. This position has given me the opportunity to utilise my chemistry skills on a large-scale basis, as I work to help patients lead healthier lives by providing ways to respond earlier to the onset of disease.

I had a wonderful time at Norbury Manor. I made such wonderful friends for life and I will always cherish the great memories. Norbury Manor will always have a place in my heart.

*Where are they now?
Honour Roll 2019*

Name	Course/Next Steps	Higher/Further Education Destinations
Jada	Communication & Media	Bournemouth University
Laurn	Psychology	Bournemouth University
Aswathy	Psychology	Brunel University London
Kia	Digital Design	Brunel University London
Asfa	Fashion Design	Buckinghamshire New University
Nina	Applied Criminology/Forensic Investigation	Canterbury Christ Church University
Amirah	Radiography	City, University of London
Huda	Radiography	City, University of London
Maryam	English	City, University of London
Saffiya	Health Sciences	City, University of London
Danniqua	Music Performance	Institute of Contemporary Music Performance
Shanelle	Nursing Studies	Kings College London
Tiara	Biomedical Science	Kings College London
Aisha	Pharmacology	Kingston University London
Anjeni	Media & Communication	Kingston University London
Najla	Nursing Studies	Kingston University London
Salma	Education	London Metropolitan University
Amana	Computer Science & Mathematics	Queen Mary University of London
Naia	Computer Science	Royal Holloway, University of London
Nida	Politics & International Relations	Royal Holloway, University of London
Cleo	Business, Management, Economics & Law	SOAS University of London
Meryem	Law	SOAS University of London
Mira	Business, Management, Economics & Law	SOAS University of London
Hilay	Clinical Pharmacology	St George’s, University of London
Francesca	Fashion	University for the Creative Arts
Sahra	Mathematics	University of Brighton

Name	Course/Next Steps	Higher/Further Education Destinations
Amechi	English Literature	University of Essex
Chantae	Psychology with Cognitive Neuroscience	University of Essex
Feruze	Psychology with Cognitive Neuroscience	University of Essex
Kelvin	International Development	University of Essex
Kwamina	Politics & International Relations	University of Essex
Umu	Psychology	University of Essex
Minahil	Law	University of Leicester
Helena	Architecture	University of Reading
Fiza	Human Resource Management	University of Roehampton
Hamzah	Psychology	University of Roehampton
Maryam	Psychology & Counselling	University of Roehampton
Meriem	Education	University of Roehampton
Umaymah	Biological Sciences	University of Roehampton
Zara	Philosophy, Religion & Ethics	University of Roehampton
Ria	Podiatry	University of Southampton
Anjali	Economics & International Development	University of Sussex
Louise	Psychology	University of Sussex
Beatriz	Graphic Branding & Identity	University of the Arts London
Olivia	Costume for Performance	University of the Arts London
Vithushika	Graphic Branding & Identity	University of the Arts London
Ayeza	Cognitive & Clinical Neuroscience	University of Westminster
Dua	Pharmacology & Physiology	University of Westminster
Mahreen	Business Management	University of Westminster
Mahum	Law	University of Westminster
Zoha	Accounting	University of Westminster
Sarah	Apprenticeship	
Fatima	Gap Year	
Hajra	Gap Year	
Ishrah	Gap Year	
Milena	Gap Year	

“Sixth form students fare well in their A Levels. The school offers a wide range of academic choices, with some relevant applied courses too. The options meet students’ needs.”

/ OFSTED 2017 /

Rise & shine



Norbury Manor
Business & Enterprise
College for Girls

Norbury Manor
Business & Enterprise College
Kensington Avenue
Thornton Heath
Croydon
Surrey CR7 8BT

T. 020 8679 0062
E. nichollse@nmbec.org.uk
www.nmbec.org.uk

 @NorburyManor

